

# ESUS

Environmental Stewardship  
Utilities & Sustainability  
Community

A Community of  IFMA™

ESUS SAG  
Newsletter

Nov. 4,  
2016

1. The ESUS Strategic Advisory Group Team + IFMA Board liaison.



Sheila Sheridan



Chris Laughman



Jenny Yeung



Bill Conley



Eric Teicholz, Chair



Dr. Sharon Jaye



John McGee



Board Liaison: Gordo Hicks

**1. REMINDER: Tuesday Nov 8 “IFMA Benefit of the Month” Webinar, 11:00 AM – 11:30 AM Central**

**Energy Storage – Is it Right for Your Building**

**Attendee URL:** <https://attendee.gotowebinar.com/register/4281010472350426369>

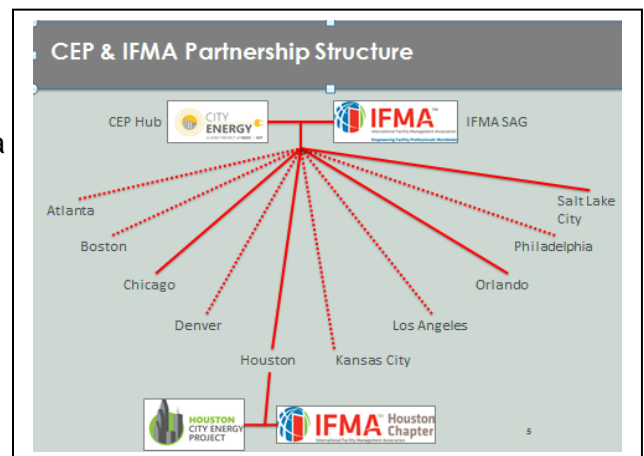
**Description:** In parallel with decreasing system costs and new business models, public policy is driving energy storage adoption around the country. Organizations are beginning to consider energy storage options, but little information is publicly available on benefits, business models, or best practices. Energy storage is a broad category of technologies with many different capabilities that can be daunting to sift through and find the best opportunities. In this session, attendees will get an overview of energy storage technologies, use cases, business models and how it can help you manage energy spend.

**2. November/December eFMJ article** “ENERGY STAR: A Case Study From the St. Louis Chapter” was written by ESUS member Christopher Laughman, CFM, SFP, LEED AP O&M. The article will be archived on IFMA’s website at:  
<http://fmj.ifma.org/publication/?i=338817&p=122>.

The Sustainability SAG’s January webinar will present ENERGY STAR case studies from IFMA and the City Energy Project.

**3. Summary of ESUS Meeting at WWP:**

The Sustainability SAG meeting at World Workplace dealt mostly with the IFMA/City Energy Project. Director Laurent Zullo and Marina Kritikos (Houston) presented the status of the 4 pilots (Houston, Orlando, Salt Lake City and Chicago) underway and future plans to expand to an additional 10 cities.



**4. How-to Guides:** ESUS is still looking for Subject Matter Experts to update the following Guides: Data Centers, Water, Landscaping, Food Service, Low Cost/No Cost Energy Savings and Commissioning. All guides are located in the Knowledge Library. ESUS has a budget to help defray author costs.

**IMPORTANT:** You will soon be receiving a Survey Monkey asking you to rank new How-to Guide topics of potential interest to you. Please take the time to fill in this survey. It will help us define not only new How-to Guides but will impact our eFMJ articles and webinars for 2017.

## **5. Internet of Things (IoT) Initiative:**

IFMA has established an IoT Task Force consisting of several SAGs (including Sustainability). The task force is a member-driven initiative that will research how the task force thinks IFMA should prepare its members for the impact that IoT will have on real estate and facility management. The Task Force invites those interested in tracking/participating in its activities to send contact information to [sustainability@ifma.org](mailto:sustainability@ifma.org). Its primary objectives will address some of the following issues:



- IoT and Security
- Documentation of relevant IoT frameworks along with supporting definitions and terminology;
- Description of current state of and emerging trends within IoT;
- Description of existing impediments in implementing IoT and available risk mitigation options;
- Description of current and emerging financial enablers for IoT implementation;
- Documentation of relevant case studies including ROI/ROA models;
- Description of potential IoT impact on IFMAs BSC and Strategy Map;

This newsletter will report on IoT sustainability findings on a regular basis.

**6. Information Technology SAG IoT Webinar:** The IT SAG is hosting an IoT webinar entitled *"IT Security for Building Control Systems - An Urgent Call to Action for FM's"* on Wednesday, Nov. 16, 11-12 CST. Go to <https://attendee.gotowebinar.com/register/1458095733004870147> for more information and to register.

## **7. IFMA/ESUS LIGHTING INITIATIVES (by Bill Conley)**

IFMA is pleased to be a member of the Better Buildings Alliance, which provides energy efficiency resources to the commercial/industrial world. IFMA serves as a program organizer working with the Department of Energy (DOE) on a



couple of initiatives that delivers guidance & Case Studies for Improved Energy Efficiency Through Lighting:

- Interior Lighting Campaign (ILC)
- Lighting Energy Efficiency in Parking (LEEP)

This Collaboration is designed to bring Resources and Benefits to Professionals in the Built Environment

#### The Interior Lighting Campaign (ILC)

The ILC is a recognition and guidance program designed to help facility owners and managers take advantage of savings opportunities from high-efficiency interior lighting solutions. The ILC was launched in May 2016 with an initial goal of replacing 100,000 fluorescent troffers with more efficient options. Within three months of the launch of the ILC, that goal was easily met and the ILC organizers set a stretch goal of replacing or retrofitting 1,000,000 fluorescent troffers with high efficiency troffers by May 2016. The ILC achieved 70% of the revised stretch goal estimating total national energy savings of 1.3 trillion BTUs, which is the equivalent of \$13.5 million in energy savings. The goal continues to April 2017.

Interior Lighting represents a significant amount of energy consumption in buildings. New, more energy efficient technologies exist and some of the new technologies offer benefits in addition to energy savings such as better lighting design and improved quality of light. The ILC focuses on such new developments in the lighting field and educates professionals on how to achieve more efficient lighting techniques.

The ILC held its 2016 Awards ceremony at the Better Buildings Alliance meeting in May of this year. One 2016 ILC Winner was the Cleveland Clinic Main Campus Learner Research. They reported that due to their lighting retro-fit that they saved 2.6 M kWh annually, which equaled the energy usage of 238 homes and realized a 55% energy reduction compared to existing usage.

Another ILC Winner was the GSA Byron Rodgers Federal Building & U.S. Courthouse. They reported an annual savings of 477,000 kWh: 358,000 kWh from new equipment, 119,000 kWh from controls. They experienced a 59% energy reduction compared to existing usage; 44% from new equipment and 15% from the use of controls. To get more information on the ILC, go to: <https://interiorlightingcampaign.org/>

#### Lighting Energy Efficiency in Parking (LEEP)

The LEEP campaign focuses on exterior lighting. For those wondering if switching from an HID to an LED lamp is worth the upgrade, the HID lamps still being used in many parking facilities have a life between 12,000 and 24,000 hours. Each time these lamps have to be replaced, the cost to service the fixture is roughly \$250 per fixture. LED lamps have an estimated lifetime between 50,000 and 100,000 hours. The deferred maintenance alone by upgrading to the LED often makes this lighting upgrade a money savings choice.

Because LED efficiency continues to increase year after year, life ratings increase, and costs continue to decrease, the vast majority of LEEP participants have opted to use LED fixtures to achieve significant energy savings. To date, the LEEP Campaign has had over 560 million square feet of parking facilities either upgraded or expected to be upgraded in the near future. This is over 1.7 million parking spaces, which translates into the energy usage of 141 million kWh or the equivalent energy usage of 13,000 homes. Participants have saved roughly \$15 million in electricity savings as a result of their participation.

LEEP Award Winners this year included the U.S. GSA Fairbanks, AK which saw 171,000 kWh saved (74%) from replacing lighting in their lots: 169,000 kWh from new equipment (68%) and 2,000 kWh from the use of controls (6%). The University of MN saved 76,000 kWh (90%); 58,000 kWh from new equipment (70%), 18,000 kWh from the use of controls (20%). Arby's reported 12,000 kWh saved (87%) and Cal State Fullerton saw 1.2 million kWh saved (72%).

More information can be found at: <http://www.leepcampaign.org/>

Through these initiatives, and others like it, IFMA and the Sustainability Advisory Group (ESUS) will continue to strive in bringing new and better ways for members to run their facilities more efficiently with cost-effective recommendations. All members are encouraged to take a look and participate in these campaigns.

**8. Welcome to our new October ESUS community members.** Welcome to the sustainability community. We look forward to your involvement in sustainability and ESUS.

**9. ESUS 2016 Webinar URLs:** In case you missed any of our 2016 webinars, they are available at the following URLs:

Jan 21 Sustainable Procurement:

<https://attendee.gotowebinar.com/recording/4973828137377506306>

Feb 17 ENERGY STAR -

<https://attendee.gotowebinar.com/recording/8637296428037464835>

Mar 8 Getting Started

<https://attendee.gotowebinar.com/recording/6074554726479061505>

May 18: Measuring and Reporting

<https://attendee.gotowebinar.com/recording/4662997302282251010>

Jun 22: Waste Stream Management

<https://attendee.gotowebinar.com/recording/2311727970939962628>

Jul 13: Engaging Tenants in Energy Efficiency

<https://attendee.gotowebinar.com/recording/4255201634878825987>

Sep 7: Resilience Planning for Facility

Managers <https://attendee.gotowebinar.com/recording/5824908416393568513>

Nov 8: Energy Storage: Is It Right for Your Building (no URL assigned yet)

## **10. News from our ESUS' Third Party Liaisons**

### **EPA:**



Link to recent article on energy efficient tenant spaces

[https://www.energystar.gov/buildings/tools-and-resources/request\\_public\\_comment\\_epa\\_energy\\_star\\_recognition\\_efficient\\_office\\_tenant\\_spaces](https://www.energystar.gov/buildings/tools-and-resources/request_public_comment_epa_energy_star_recognition_efficient_office_tenant_spaces)

The EPA is interested in your comments on proposed new tenant recognition for energy efficient design and construction. Please submit your comments to “Jacobs, Cindy” <Jacobs.Cindy@epa.gov> by November 14.

### **DoE:**



There are two DOE webinars relevant to IFMA in November:

[Put a Meter On it: the why and how of submetering energy and water use in buildings, data centers, facilities](#)

[Building Envelope Technology webinar](#)

### **RICS**

Call to action: Help us shape the debate  
at COP 22 in Marrakech



Ahead of COP22 in Marrakech, as co-leaders of the Working Group on Measurement, Data and Accountability within the [Global Alliance for Buildings and Construction \(GABC\)](#), RICS and the International Energy Agency (IEA) are calling on stakeholders to participate in a flagship survey on Data Capture and Management.

The Global Alliance for Buildings and Construction to combat Climate Change was launched on the occasion of Buildings Action Day on December 3, 2015 at COP21 in Paris, France. The Alliance is supported by the [United Nations Environment Programme](#) and has been joined by more than 20 states, representing more than 1 billion people and over 70 leaders from construction and real estate.

Why is RICS running this survey?

Access to robust measurement, data and reporting is crucial for policy making, financial and investment decisions and for successfully making the business case for resource efficient, low-carbon buildings.

With the help of the survey we want to review what type of data is being collected where, by whom and for what purpose, and also what the major challenges are in relation to more systematic data capture and management by stakeholders along the value chain.

How you can help us

IFMA members are invited to support our project by completing the GABC Data Capture and Management Survey which is available via the link below and by sharing it amongst your professional networks. The survey should not take more than 10 minutes of your time.

[https://www.surveymonkey.com/r/GABC Data Capture Management](https://www.surveymonkey.com/r/GABC_Data_Capture_Management)

Preliminary survey findings will be present by Ursula Hartenberger, RICS Global Head of Sustainability on Buildings Day at COP22 in Marrakech and final results will be summarized in a report published by the Working Group in 2017.

Thank you for your support on behalf of RICS and the GABC Measurement, Data and Accountability Group

### **11. Global News From Around the World**

The ESUS SAG Newsletter will periodically present news from IFMA chapters around the world. This first article (attached), by ESUS SAG member Jenny Yeung, discusses current sustainability work at the Hong Kong IFMA chapter.



Please send comments and suggestions to: [sustainability@ifma.org](mailto:sustainability@ifma.org)